



PRESS PACK
PRESS RELATIONS CONTACT
Muriel Courché

Director of Communication
Tel. 04 97 05 22 03 - mobil: 06 68 93 02 42
e-mail: mcourche@paysdegrasse.fr

EXHIBITION BY
RENÉ BRUNO
PHOTOGRAPHER SCULPTOR
23 APRIL TO 30 SEPTEMBER 2015

Mouans - Sartoux



The Gardens of the International
Perfume Museum

FROM THE IMAGE TO THE HEART

PRESS FOLDER, RENE BRUNO,

EXHIBITION MANAGER

Olivier Quiquempois, Heritage Curator of the Museums of Grasse

Grégory Couderc, Assistant Curator, International Perfume Museum, Grasse

PRESS RELATIONS:

Muriel Courché

Director of Communication

Tel. +33 (0) 4 97 05 22 03 - Mobile +33 (0) 6 68 93 02 42

mcourche@paysdegrasse.fr

TABLE OF CONTENTS

Edito	3
Presentation of the exhibition	4
Carte blanche to René Bruno	5
Installation plan of works in the gardens	6
The Gardens of the International Perfume Museum and contemporary art	7
Why have a Conservatory of plants for perfume	8
Practical information	9

TO CONTACT THE ARTIST:

René Bruno

<http://www.renebrunoyapoudou.com>

EDITORIAL

Since its inauguration, the Gardens of the International Perfume Museum in Mouans-Sartoux has supported contemporary art by, every summer, giving an artist living and working in the region of Grasse the opportunity to exhibit their work in the midst of our fields of fragrant flowers and our sensory trail.

This year, we are happy to welcome photographer René Bruno who has accepted our invitation.

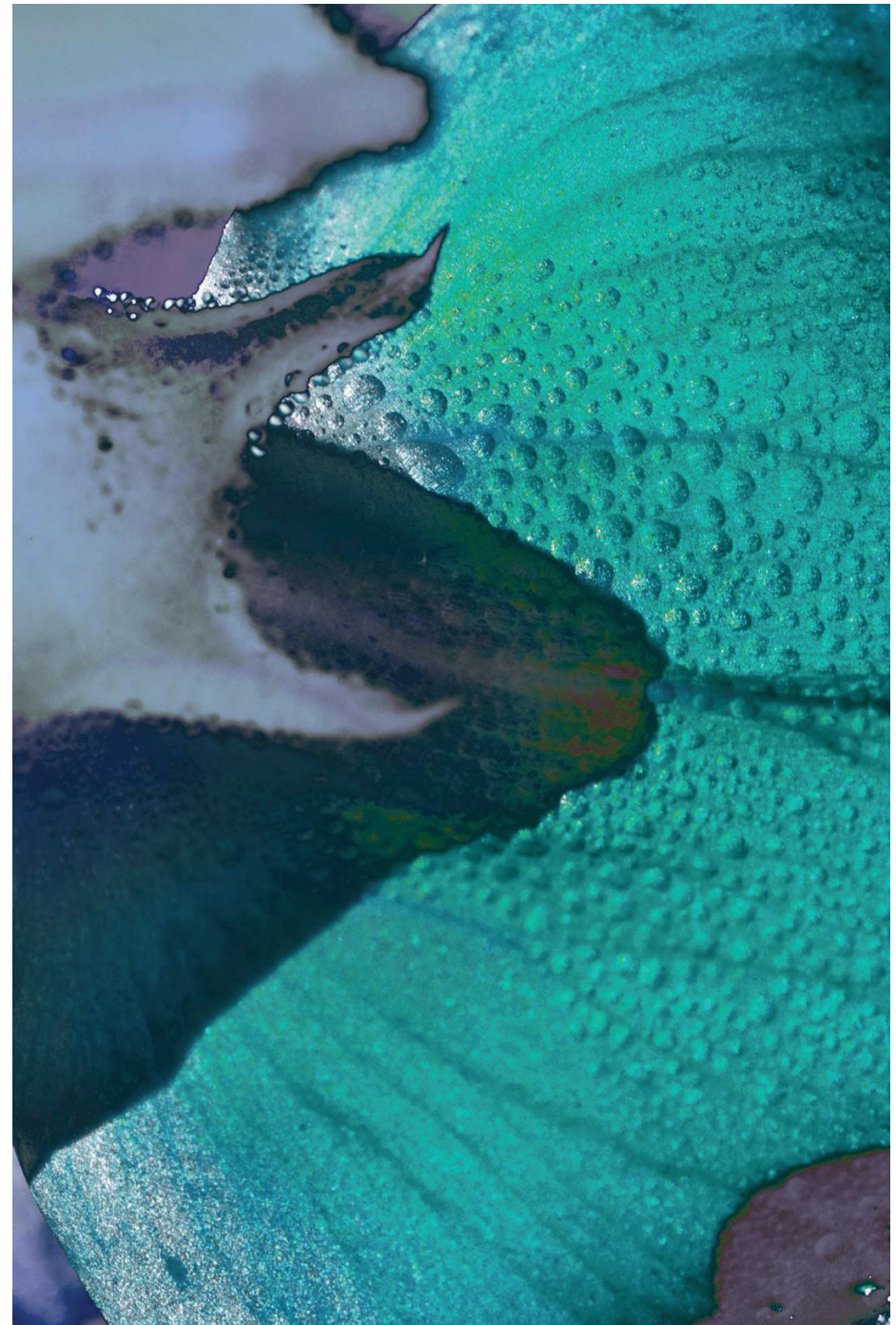
It may seem surprising to choose a garden as an exhibition venue for photographs, a medium regarded as fragile and requiring subdued lighting to be appreciated. But René Bruno is a photographer and sculptor of images. His creations explore the third dimension with power and intensity. The flowers, insects and figurative forms he has elected to immortalise are transformed by his vision of nature. Depending on the imagination or mood of the onlooker, mysterious and abstract, even magical forms appear and offer themselves up to our eyes.

Every piece occupies its own individual imaginary space but, together in the gardens, the sculptures gradually form a surprisingly coherent whole, carefully designed by the artist.

But we don't want to give everything away and leave to the visitor the pleasure and the surprise of discovering, during their stroll along the paths in the Gardens, the work of René Bruno, who is a photographer, sculptor and poet: his view of nature will most definitely astound and enchant more than the odd person.

Olivier Quiquempois
Heritage Curator,
Director of the Museums of Grasse

Mer [Sea], 2014
© René Bruno



INTRODUCTION TO THE EXHIBITION

The Gardens of the International Perfume Museum are the venue this summer of an exhibition by the artist René Bruno, a photographer and sculptor of images. Showing near-abstract close-ups and a universe of encounters in the heart of flowers, René Bruno questions our vision of the plant world and leads us to discover the hidden faces of plants and insects. He reveals what the eye does not see, thereby inviting anyone pondering his images to dream and to feel a sense of relaxation and serenity. Using different substrates, playing with transparency, mixing natural and man-made materials, the artist produces photographic installations organised into veritable sculptures, which are unveiled as one walks through the garden.



Coquelicot [Poppy] © René Bruno



Chimère [Chimera] © René Bruno

RENÉ BRUNO GIVEN CARTE BLANCHE

It all started when he was 5 years old and met the Cyclops gaze of a Kodak Instamatic ... and a hammer ... The click was a loud one! Amazing what was in there! The effect was immediate and a long career in photographic development was born... seeking out the essence of things by deconstructing appearances. He worked his way through a series of cameras as he produced photos and refined his dexterity, in turn going down blind alleys and finding enlightenment, and discovered that he preferred light and nature to dark rooms... bowing respectfully before a flower, the only true queen of the world ... to bear witness to an instant in eternity, another reality ... relaxed posture ... holding his breath ... click ... penetrating a sacred world ... a galaxy aspiring to the infinitely small to better discover the cosmos ... shapes, colours, light, spirit ... abstraction of what no longer exists ... respect for a perfectly ordered chaos ... a voyage along the hazy border between the invisible and invisible
I have seen such beautiful things in the hearts of flowers that I simply could not keep them to myself, must-see images like ... a beam of light to the heart ...

«Is it not frustrating, when someone very knowledgeable or talented dies ... and takes with them the positive achievements of their life? To develop talents sustainably, I have long dreamed of building a machine so that I could recover beautiful things ... a sort of recycling, I suppose! ... and then redistribute them for the indigents of the heart or those too rushed to stop and look ...

Lost in my black hole of matter, I battled in the midst of bolts and wires when suddenly ... I heard a murmur: when someone dies on earth, their qualities and their wonderful thoughts are transformed into petals, stamens or pistils, or sometimes even simply into flowers ... when light abounds ...

Many people die at any one time. This is why a lot of flowers grow constantly all over the planet, like notes which touch each other ...and even on other planets, like sacred dew.

Seeds of light for spirits of colour, on evanescent forms – lean in to inhale them before we die.

With more haste and less speed, let us approach them, gaze on them and absorb these beckoning qualities ...like a beam of light to the heart»

Very quickly, the desire came to me to explore all types of photographic substrates, expressing volume rather than flatness, marrying materials, uniting contrasts, telling stories and embellishing spaces where nature did not always find its way in.

The idea of planting these “flower works” in the beds of the MIP Gardens and thus to return my creations to the heart of a natural scent-filled space immediately attracted and inspired me.

This installation brings together in one exhibition natural flowers and “flower works” as an offering to all these queens who reveal their little and great secrets of light.

René Bruno



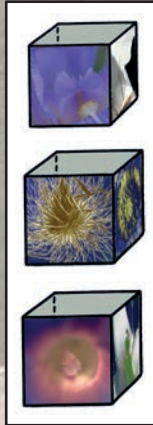
© René Bruno

- 1 Passion Patio
- 2 The Honorine Throne
- 3 Chimera
- 4 Perfume in Suspension
- 5 Romantic Pause
- 6 Precious Water
- 7 The Blue Note
- 8 Flower Dance
- 9 Precious Bee
- 10 Miss Cherry
- 11 Angel Cube
Cube of Gold
Iridescent Cube

9



10



11



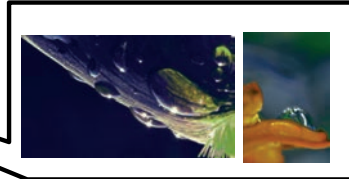
1



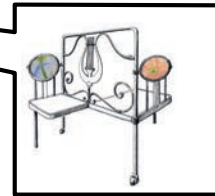
8



7



6



5



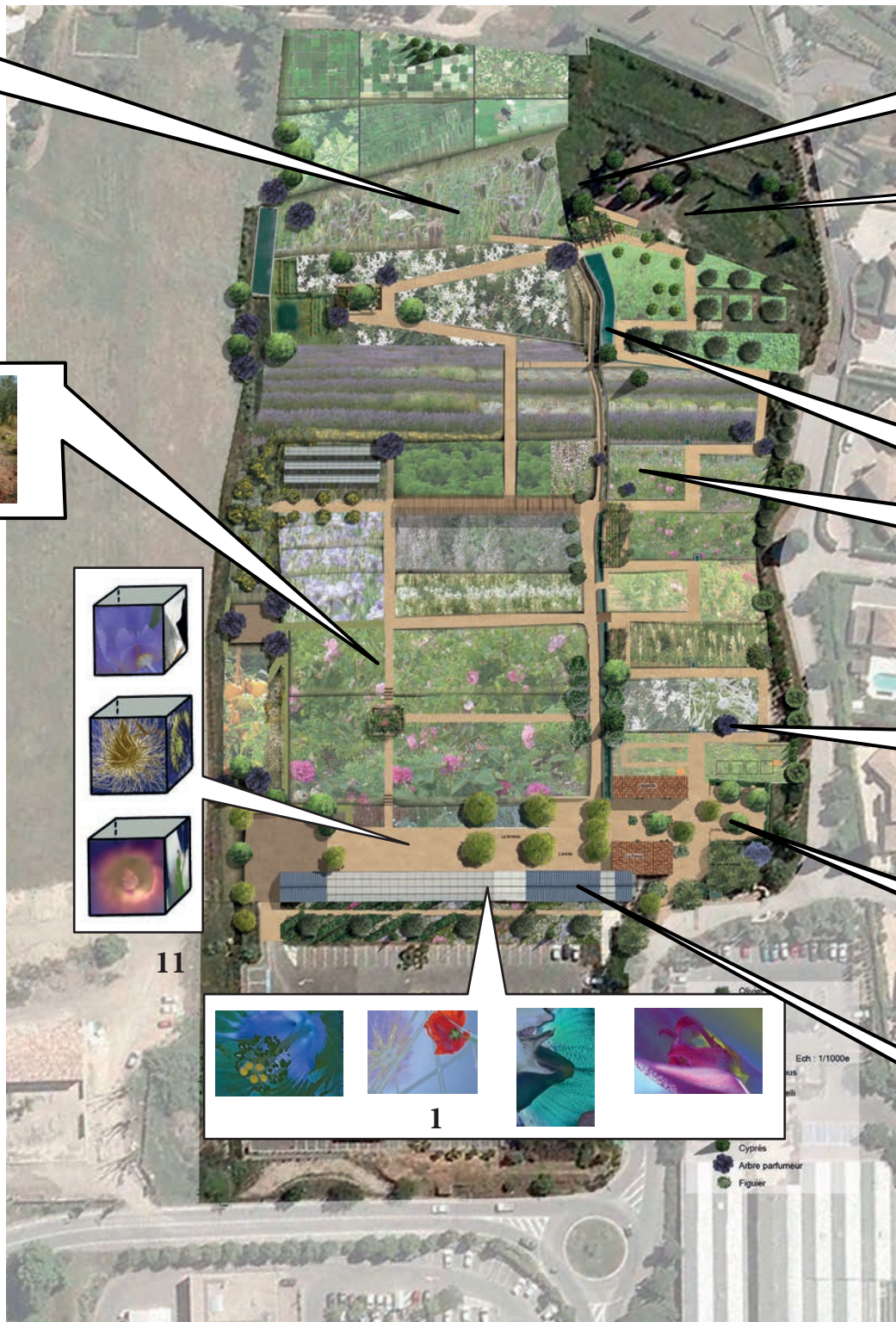
4



3



2



Ech : 1/1000e

- Cyprés
- Arbre parfumeur
- Figuier

The Gardens of the International Perfume Museum and contemporary art

Dès Since 2007, La Bastide du Parfumeur has adopted a policy of partnership aiming to develop contemporary creation in its gardens. Between the old canal and the stone basin, any visit was already regularly the location of encounters with contemporary artworks such as the exhibition by artist Michel Blazy in partnership with the Space for Concrete Art, the colonies of artists in the town of Mouans-Sartoux and the artistic creations of students at the Antibes School of Horticulture supported by Xavier Theunis, the artist from Nice.

Moreover, the International Perfume Museum has already called upon renowned artists such as Christophe Berdaguer & Marie Pejus, Peter Downsbrough, Gérard Collin Thiebaut, Brigitte Nahon, Jean-Michel Othoniel, Dominique Thévenin (...) to add to and offer new interpretations of the museum's spaces, both inside and out.

This networking approach also helps us reach a wider public and develop basic cultural partnerships in the area of the Pays de Grasse.

Indeed, contemporary creation on the theme of perfumery can extend into a variety of practical skills such as land art, glass working, fragrance stimulation, the industrial aspect ...

In 2011, for its first summer exhibition in the MIP Gardens, the curators of the Museums of Grasse, under the aegis of the local authority gave carte blanche to Bernard Abril, a contemporary artist and sculptor. In 2014, the exhibition was dedicated to the work of Cathy Cuby, artist and sculptor, who was introduced during the summer. And to continue this dynamic in the field of contemporary art, the curators of the Museums of Grasse decided to present the artistic work of René Bruno, photographer and sculptor. In giving carte blanche to the artist, we hope to raise the public's awareness about the place of aesthetics and the art of the garden, but also art in the garden.

The programme of contemporary art in the Gardens testifies to the curators' will to develop contemporary art across the various museum sites.

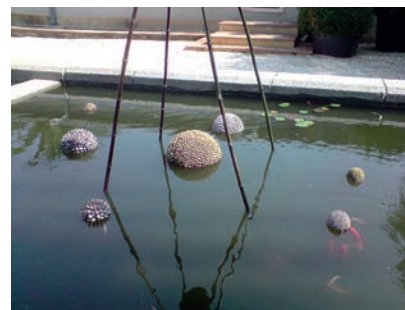
This networking approach also helps us reach a wider public and develop basic cultural partnerships in the area of the Pays de Grasse.



Bernard Abril, Jmip, 2011



Bernard Abril, Jmip, 2011



Cathy Cuby, Jmip, 2014
Bulles flottantes végétales



Cathy Cuby, Jmip, 2014
Araignées

Why have a conservatory of plants for perfume?

Although they were the origin of perfumery in Grasse and its international reputation, the plants are today very sparse in the landscape, to the enormous disappointment of tourists who still all too often imagine Grasse to be an immense field of fragrant flowers. As a living memory and ambassador of perfumery internationally, the mission of the International Perfume Museum is to present various aspects in connection with this industry. In the same way as the conservation of the heritage of perfume factories, the creation of a conservatory of plants for perfume is a major factor in the protection and promotion of the heritage of Grasse and its know-how.

The challenges are huge as the following are involved:

1. protecting, for future generations, a natural heritage of an internationally acknowledged quality,
2. protecting tangible and intangible know-how typical of Grasse,
3. responding to the high expectations of the people of Grasse and tourists who lament the absence of flowers growing in the urban landscape.

Historically, botanical conservatories and museums have evolved in the same way. This history of the first botanical gardens shows, as for the first collections which were to give rise to museums, that their creation and their operation have been closely linked to the teachings imparted to students.



As with the museums, they subsequently became seats of research open to all but where the non-specialist public could only marvel, without understanding, before the beauties offered to them.

In an age where many museums, like the International Perfume Museum, are being redesigned and where the collections are no longer presented to the public in full but based around a theme or a scientific discourse, conservatories become museums of the living.

Thus, the use of modern museographical techniques, adapted for the open air, and a policy of mediation derived from interpretive methods adopted for nature parks, are proving indispensable.



PRACTICAL INFORMATION

OPENING HOURS

10 a.m. to 7 p.m.

ADMISSION

Admission including exhibition: € 4 (half-price € 2)

Joint ticket (MIP and MIP Gardens): € 5 (May) - € 7 (June to September)

Free admission (proof required): under 18's, unemployed, disabled, accompanied school groups.

Guided visits of the gardens every Saturday at 3 p.m. (May) and 5 p.m. (June / July / August).

ACCESS

The Gardens are accessible to the disabled

THE GARDEN SHOP

Souvenirs, postcards, art books the shop is an opportunity to get a bit more from your visit.

GARDENS OF THE INTERNATIONAL PERFUME MUSEUM, JMIP

969 chemin des Gourettes Tel. +33 (0) 4 92 98 92 69

Free car park

Bus stop: Les Jardins du MIP (bus lines: Sillages Gare SNCF Mouans-Sartoux: 22, 28).

GPS coordinates:

latitude 43.614218 / longitude 6.977749

www.museesdegrasse.com

